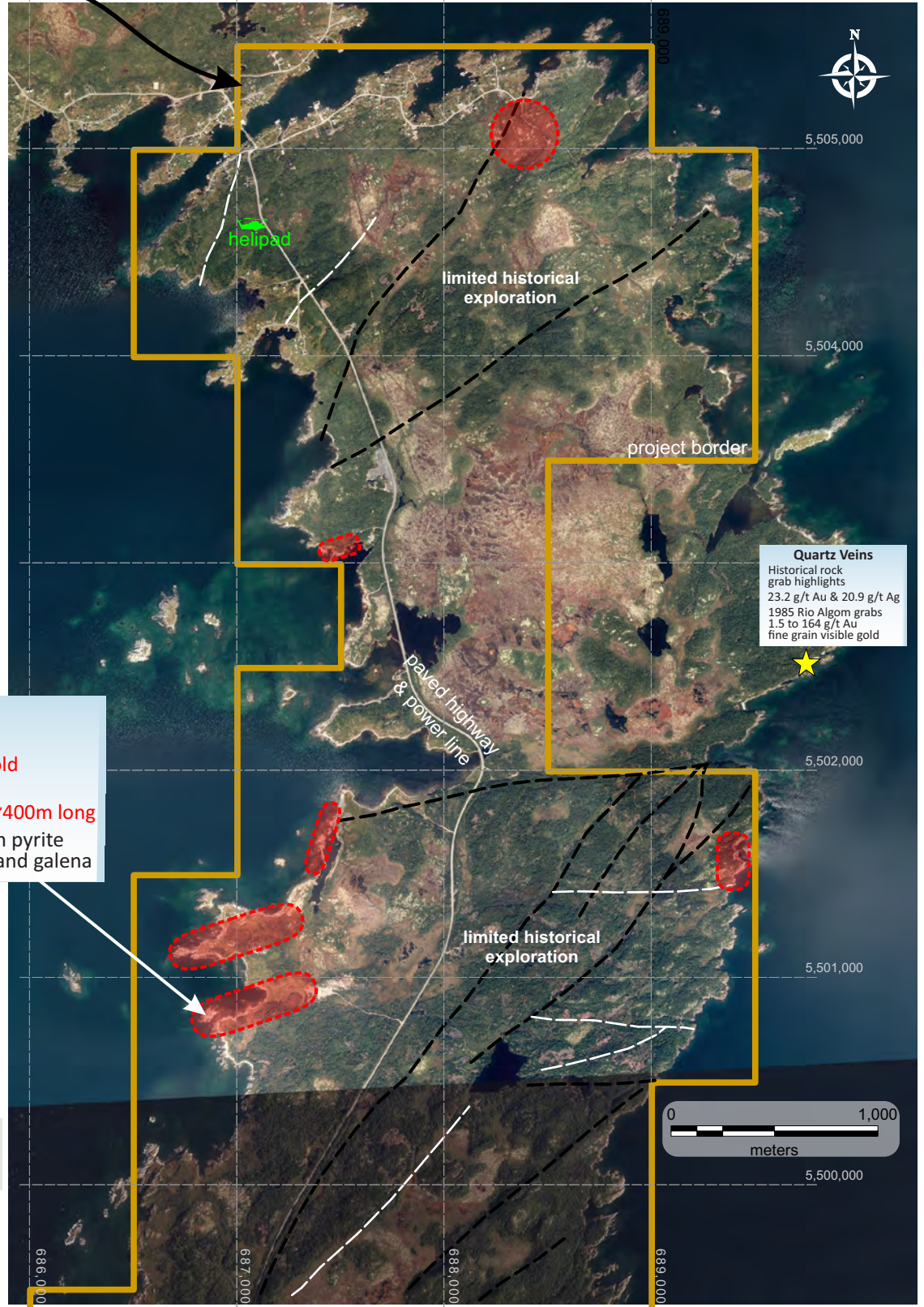
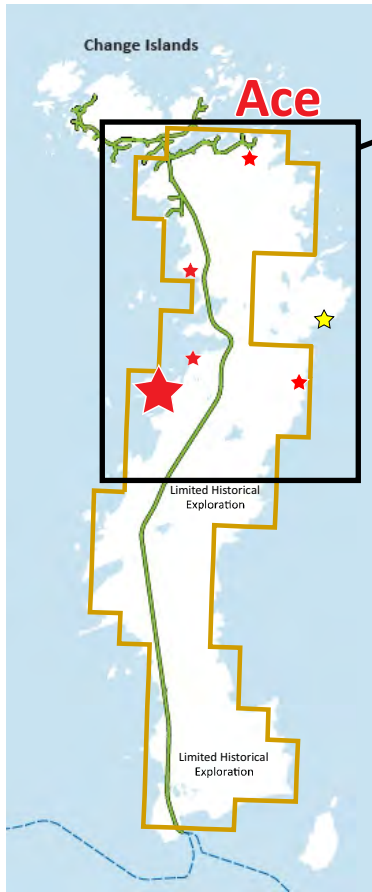


# Ace Project

## Early Stage Prospecting Target Areas



**Ace Zone**  
 New Gold Zone Discovery,  
 rock grab highlight to 5.4 g/t gold  
 Variably gossanous shear zone,  
 up to 20m wide and traced to ~400m long  
 ser-carb-quartz alteration, with pyrite  
 and arsenopyrite ± sphalerite and galena

**Quartz Veins**  
 Historical rock  
 grab highlights  
 23.2 g/t Au & 20.9 g/t Ag  
 1985 Rio Algom grabs  
 1.5 to 164 g/t Au  
 fine grain visible gold

**Early Stage  
 Prospecting  
 Target Area**



Major Lineament ———  
 Minor Lineament - - -

