

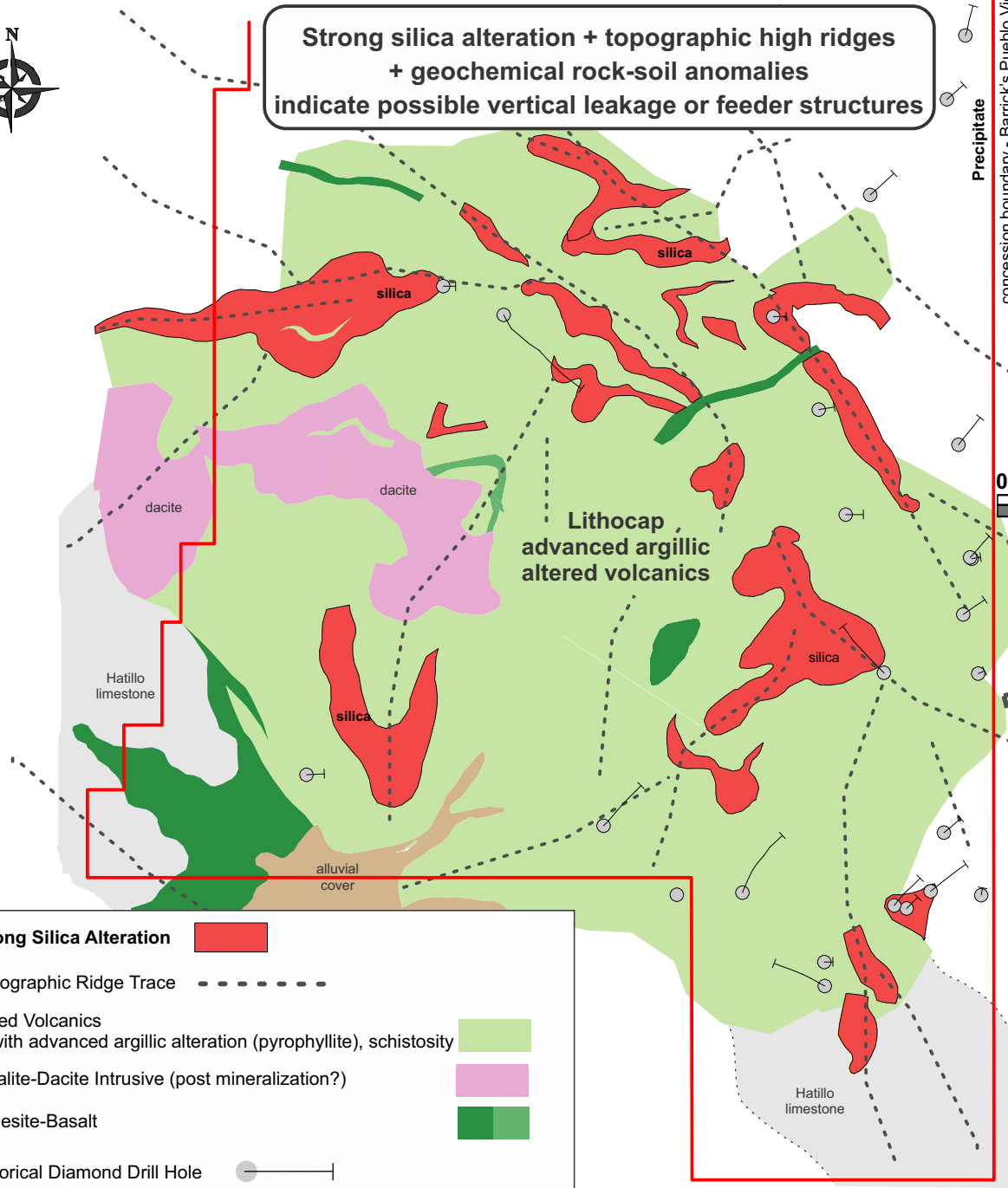
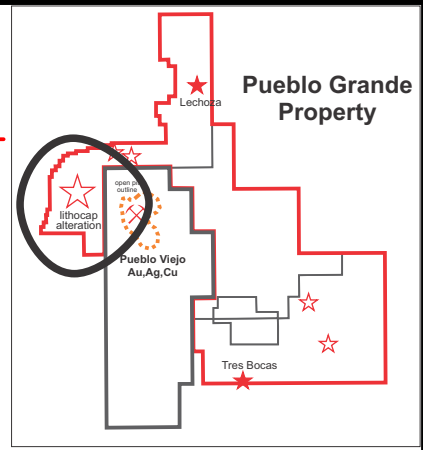
Pueblo Grande

Loma Cuaba Lithocap Zone

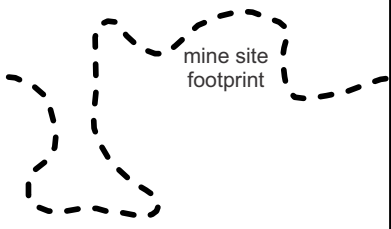
Geological Mapping Compilation



Strong silica alteration + topographic high ridges
+ geochemical rock-soil anomalies
indicate possible vertical leakage or feeder structures



Precipitate
concession boundary - Barrick's Pueblo Viejo



Barrick's
Arroyo Hondo
Concealed
Exploration
Target Area

Barrick's
Pueblo Viejo
Gold Mine

Strong Silica Alteration	
Topographic Ridge Trace	
Mixed Volcanics - with advanced argillic alteration (pyrophyllite), schistosity	
Tonalite-Dacite Intrusive (post mineralization?)	
Andesite-Basalt	
Historical Diamond Drill Hole	 —